

2-day Xiamen Itinerary

Xiamen

Xiamen: A Coastal Paradise of Culture and Beauty

Welcome to Xiamen, a picturesque coastal city in China's Fujian province. This comprehensive 2-day guide will take you through the city's colonial architecture, beautiful gardens, and rich cultural heritage, perfect for first-time visitors.

Historical Overview

Xiamen, formerly known as Amoy, has been a significant port city since ancient times. Its strategic location made it an important trading hub during the Maritime Silk Road era. Today, it seamlessly blends its historical charm with modern development, creating a unique coastal metropolis.

Iconic Landmarks

- Gulangyu Island: A UNESCO World Heritage site known for its colonial architecture and car-free environment.
- Hulishan Fortress: A historic military fort offering stunning views of the Taiwan Strait.
- Nanputuo Temple: A renowned Buddhist temple with a history spanning over a thousand years.

Cultural Treasures

- Xiamen University: One of China's most beautiful campuses with stunning architecture.
- Organ Museum: A unique collection showcasing historical musical instruments.
- Shuzhuang Garden: A classical Chinese garden with beautiful seaside views.

Charming Areas

- Zhongshan Road: A bustling pedestrian street perfect for shopping and local snacks.
- Zeng Cuo An Village: A cultural creative district with artistic charm.

Xiamen Lifestyle

- Cuisine: Famous for seafood and Minnan specialties.
- Tea Culture: Home to traditional tea houses and local tea varieties.

- Shopping: Mix of modern malls and traditional markets.

Green Spaces

- Wanshi Botanical Garden: A peaceful retreat with diverse plant species.
- Yundang Lake: A scenic urban lake perfect for evening strolls.

Practical Travel Tips

- Transportation: Public buses and ferries are convenient; consider renting a bicycle on Gulangyu.
- Best Times to Visit: Spring (March-May) or Autumn (September-November) for pleasant weather.
- Language: Basic Mandarin is helpful; English is understood in tourist areas.
- Safety: Xiamen is generally very safe for tourists.

2-Day Itinerary Highlights

Day 1: Hulishan Fortress, Gulangyu Island, Nanputuo Temple, Xiamen University

Day 2: Wanshi Botanical Garden, Zhongshan Road, Convention Center,

This guide presents a curated selection of over 30 locations, allowing you to customize your Xiamen experience. Each destination offers unique insights into the city's culture and charm.

Xiamen is more than just a coastal city; it's a perfect blend of historical heritage and modern development. As you explore its tree-lined streets, visit its cultural landmarks, and taste its local delicacies, you'll discover why it's often called the "Garden City by the Sea."

Let this enchanting city captivate you with its colonial architecture, peaceful gardens, and vibrant culture. Enjoy your journey in Xiamen!



Itinerary Preview

2 days

DAY 01

Gulangyu

South Putuo Temple

Xiamen University

DAY 02

Xiamen Botanical Garden [Northwest Gate](#)

Zhongshan Road

Xiamen International Conference & Exhibition
Center [Northwest Gate](#)





Daily Events



Day 1

09:30

Gulangyu

Gulangyu, Siming District, Xiamen, China, 361001

12:15

13:30

South Putuo Temple

China, Fu Jian Sheng, Xia Men Shi, Si Ming Qu, 思明南路515号 邮政编码: 361005

15:30

16:00

Xiamen University

422 Si Ming Nan Lu, Si Ming Qu, Xia Men Shi, Fu Jian Sheng, China, 361005

18:00

Map for Day 1



Day 2

09:00

Xiamen Botanical Garden [Northwest Gate]

F445+JX4, Cheng Gong Da Dao, Si Ming Qu, Xia Men Shi, Fu Jian Sheng, China, 361003

11:00

11:45

Zhongshan Road

P4MX+7QC, Zhong Shan Lu, Tong An Qu, Xia Men Shi, Fu Jian Sheng, China, 361106

13:45

14:30

Xiamen International Conference & Exhibition Center [Northwest Gate]

198 Hui Zhan Lu, Si Ming Qu, Xia Men Shi, Fu Jian Sheng, China, 361008

16:30

Map for Day 2





Spots



Lianhuashan Park

32CJ+4FH, Lian Nan Lu, Xin Luo Qu, Long Yan Shi, Fu Jian Sheng, China, 364030



Chuxi Tulou cluster

China, Fu Jian Sheng, Long Yan Shi, Yong Ding Qu, 洋湖线GWX2+HR6 邮政编码: 364113

Summary:

Hakka cultural site featuring unique, communal homes dating back to the 15th century.

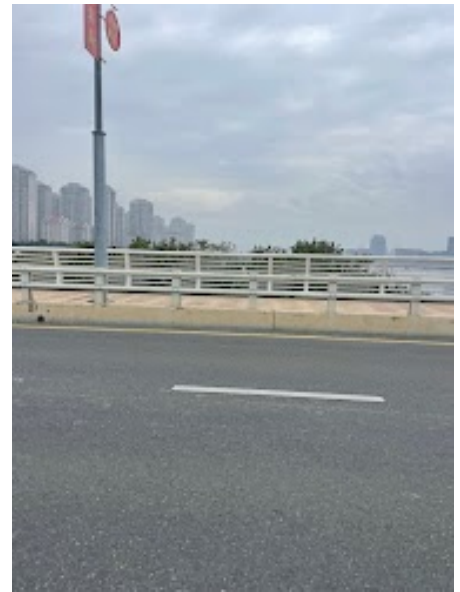
Phone:

0597 558 6601



Xinglin Wan Bridge

H3X9+632, Jimei District, Xiamen, Fujian, China, 361021



Wutong Passenger Wharf

2500 Huan Dao Dong Lu, Hu Li Qu, Xia Men Shi, Fu Jian Sheng, China, 361016



Zhongshan Park 南 Gate

F35Q+5MW, Gong Yuan Dong Lu, Si Ming Qu, Xia Men Shi, Fu Jian Sheng, China, 361001

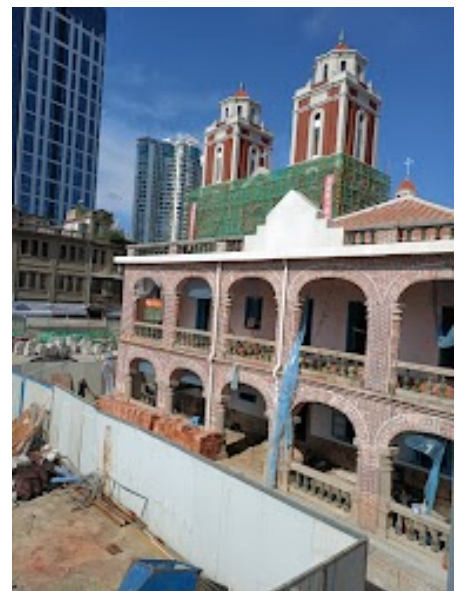
Phone:

0592 207 0465



Ci'an Road Catholic Church

15 Ci An Lu, Si Ming Qu, Xia Men Shi, Fu Jian Sheng, China, 361001



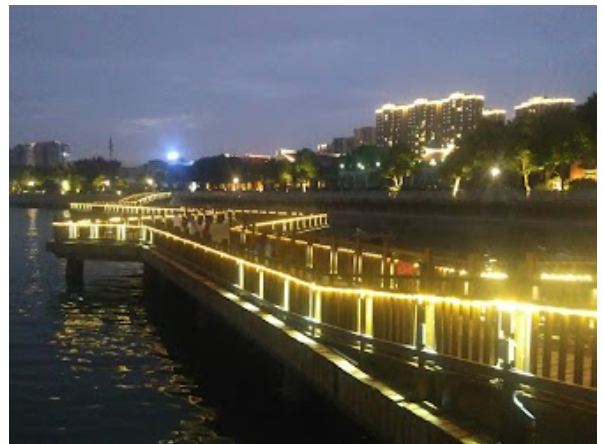
Xiangshan Park

J7HV+WXH, Xiang'An, Xiamen, Fujian, China, 361101



Wuyuanwan Wetland Park

Huli District, Xiamen, China, 361016



Zeng Cuo'ancun

Zeng Cuo'ancun, Siming District, Xiamen, Fujian, China, 361005



Yundangnei Lake

Yundangnei Lake, Xiamen, China



Xiamen Huandao Road Haimingyue Guesthouse

12, Huangcuo, She, Binhai Street, 黄厝村思明区厦门市福建省 China, 361000

Phone:

133 0602 6853

Tianma Mountain

Tianma Mountain, Jimei District, Xiamen, China, 361021

Xiamen Botanical Garden [?]Northwest Gate[?]

F445+JX4, Cheng Gong Da Dao, Si Ming Qu, Xia Men Shi, Fu Jian Sheng, China, 361003



Gulangyu Piano Museum

45 Huang Yan Lu, Si Ming Qu, Xia Men Shi, Fu Jian Sheng, China, 361001

Summary:

Vintage Steinways, gold-plated & self-playing instruments, displayed in a tranquil seaside pavilion.

Phone:

0592 206 0238



South Putuo Temple

China, Fu Jian Sheng, Xia Men Shi, Si Ming Qu, 思明南路515号 邮政编码: 361005

Summary:

Tang Dynasty–era Buddhist temple in spacious landscaped grounds featuring terraces, pools & pagodas.

Phone:

0592 208 8554

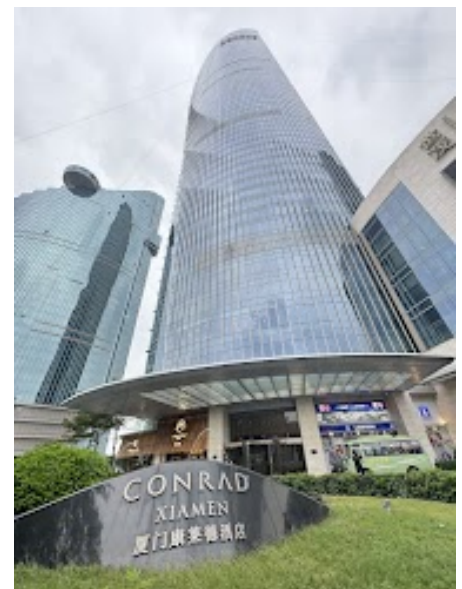


Conrad Xiamen

186 Yan Wu Xi Lu, Si Ming Qu, Xia Men Shi, Fu Jian Sheng, China, 361005

Phone:

0592 258 6666



Baicheng Sandy Beach

China, Fu Jian Sheng, Xia Men Shi, Si Ming Qu, Huan Dao Nan Lu, 近胡里山炮台 邮政编码: 361005



Haoyueyuan

3 Zhang Zhou Lu, Si Ming Qu, Xia Men Shi, Fu Jian Sheng, China, 361002

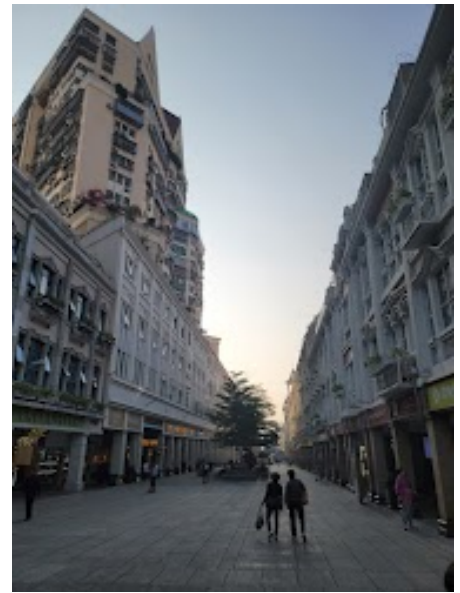
Phone:

0592 206 8251



Zhongshan Road

P4MX+7QC, Zhong Shan Lu, Tong An Qu, Xia Men Shi, Fu Jian Sheng, China, 361106



Xiamen Tianzhu Mountain Tourism Scenic Spot

HW6Q+C5X, Fu Lian Lu, Hai Cang Qu, Xia Men Shi, Fu Jian Sheng, China, 361027



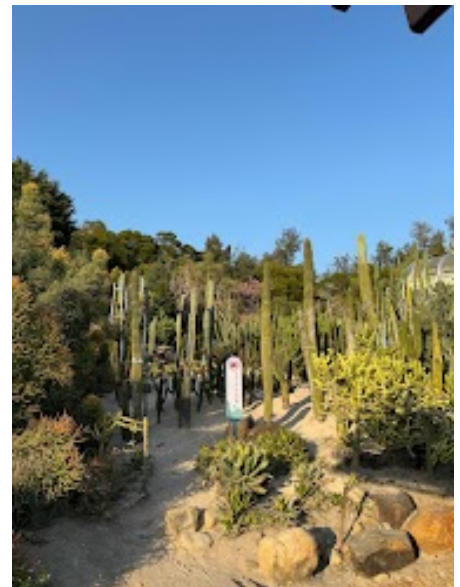


Kai He Lu, Si Ming Qu, Xia Men Shi, Fu Jian Sheng, China, 361001



Botanical Garden of Xiamen University

C4P4+PF9, Ling Yun Sui Dao, Si Ming Qu, Xia Men Shi, Fu Jian Sheng, China, 361005



Gulangyu Organ Museum

43 Gu Xin Lu, Si Ming Qu, Xia Men Shi, Fu Jian Sheng, China, 361210



Xiamen International Conference & Exhibition Center

Northwest Gate

198 Hui Zhan Lu, Si Ming Qu, Xia Men Shi, Fu Jian Sheng, China, 361008

Phone:

0592 595 9898



Hulishan Cannon Fort

China, Fu Jian Sheng, Xia Men Shi, Si Ming Qu, Huan Dao Nan Lu, 曾厝垵路2 邮政编码: 361005

Summary:

Sizable, historic fortress with numerous cannons, plus history exhibits & sweeping ocean views.

Phone:

0592 209 9603



Shuzhuang Garden

Siming District, Xiamen, China, 361001



Xiamen University

422 Si Ming Nan Lu, Si Ming Qu, Xia Men Shi, Fu Jian Sheng, China, 361005

Summary:

Landscaped campus of a multi-disciplinary university founded with donations from overseas.

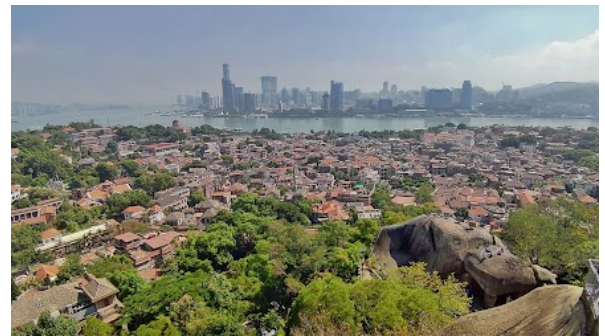
Phone:

0592 218 0000



Gulangyu

Gulangyu, Siming District, Xiamen, China, 361001



Dora's House Sunlight Rock Branch

China, Xia Men Shi, Si Ming Qu, No 50、 54, Huangyan Road, Gulangyu 邮政编码:
361002

Phone:

0592 206 8869

Hulishan Fortress

Siming District, Xiamen, China, 361005

Navigation College of Jimei University Library

H39W+J47, Cen Xi Lu, Ji Mei Qu, Xia Men Shi, Fu Jian Sheng, China, 361021

Phone:

0592 618 1767